

# New England HOME

Celebrating Fine Design,  
Architecture, and Building

Seductive  
Landscapes From  
City to Shore

Inns and Hotels  
With All The  
Style of Home

## Balancing Acts

Homes  
that perfectly  
unite past and present, indoors  
and out, luxe and livable

PLUS: BEST-  
DRESSED WINDOWS  
AND FURNITURE  
FOR A CAUSE

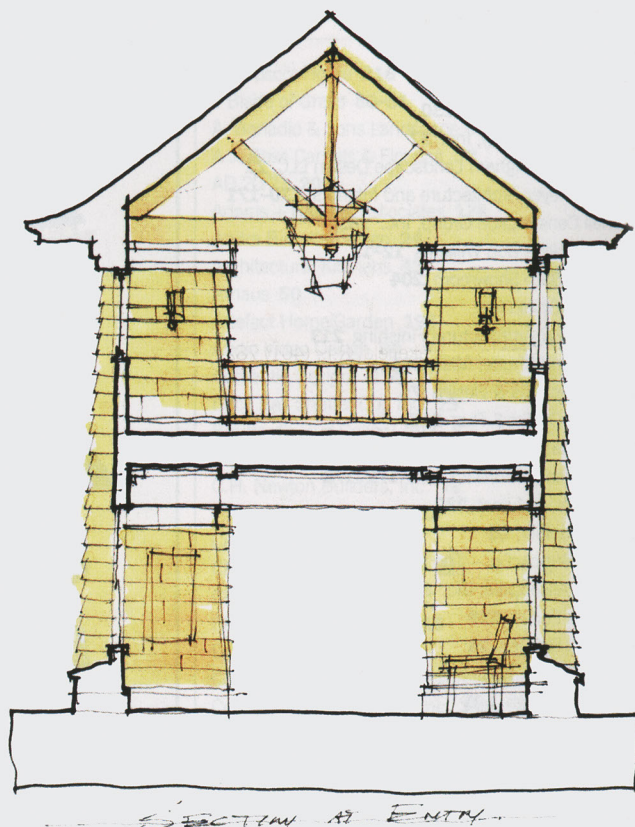
March–April 2015

\$5.95US \$6.95CAN



Display until May 11, 2015  
NEHOMEMAG.COM





**THESE SKETCHES WERE** studies I did for the entry foyer of a Rhode Island house that sits on nearly the highest point of Aquidneck Island, with great views of the ocean to the south. A series of spaces in the entry leads to a living room on axis with the front door. Bringing the shingled wall finish inside the entry was a deliberate choice, intended to set a casual or informal mood for the house. I was inspired by the interiors of a well-known Shingle-style house, called Clingstone, that perches on a rock in Narragansett Bay. The primary living rooms on the first floor of Clingstone are shingled in white cedar, which makes them unique and interesting spaces. Not all “great ideas,” however, get buy-in from clients, and we ultimately abandoned this concept for a more formal aesthetic. Sometimes sketches like these just end up being filed—but this doesn’t discourage us from pushing the envelope and developing concepts that are worth exploring, regardless of whether they make it to the final design.

